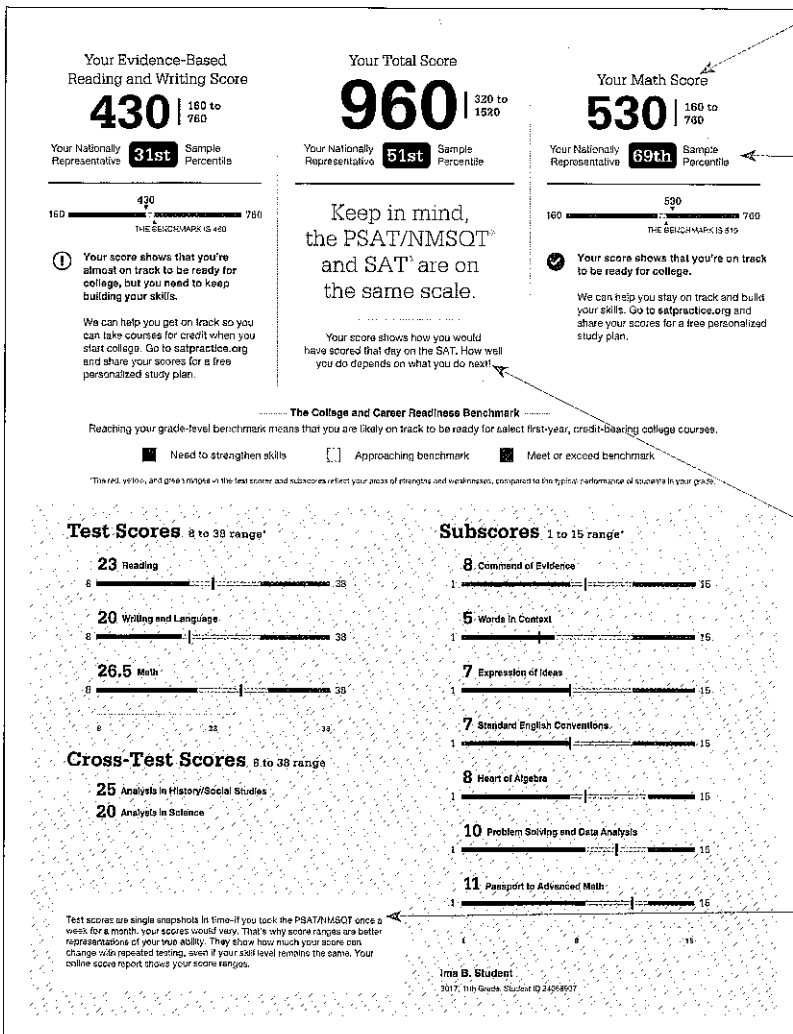


## A PARENT TUTORIAL

# Understanding 2017 PSAT/NMSQT Results

### A Case Study: Ima B. Student's PSAT/NMSQT Score Report

Take a look at Ima B. Student's sample score report below and on the back. Use the information to help you interpret your student's PSAT/NMSQT® Score Report.



#### What Are Ima's Scores?

Ima's Evidence-Based Reading and Writing score is 430, and her Math score is 530. In Evidence-Based Reading and Writing, Ima's score is approaching the benchmark (explained on the report), but she is not quite on track for college readiness. In Math, however, Ima is exceeding the benchmark and is on track. Test scores, cross-test scores, and subscores can give Ima a better understanding of areas to work on.

#### What Are Ima's Score Percentiles?

Since Ima is in the 11th grade, the percentiles compare her scores with those of all 11th graders in the nation. Ima scored as well as or better in Evidence-Based Reading and Writing than 31% of a nationally representative group of juniors. In Math, she scored as well as or better than 69% of a nationally representative group of juniors. Additional percentiles are available in Ima's online score report.

#### How Will Ima Do on the SAT?

The PSAT/NMSQT and SAT® are scored on a common scale; therefore, if Ima had taken the SAT instead of the PSAT/NMSQT on the same test date, she would have received the same score. When Ima takes the SAT, she will likely have had additional learning from school and practice. Her PSAT/NMSQT results can help Ima focus her efforts in high school to be better prepared for the SAT.

#### What Are Ima's Score Ranges?

Ima can sign in to her online score report to see her score ranges. They indicate how much her score would likely vary if she took the test repeatedly under the same conditions, with no change in her skill level.

## National Merit Scholarship Corporation

**National Merit Scholarship Corporation (NMSC)** conducts the National Merit Scholarship Program, an excellent opportunity for recognition and college scholarship.

To designate students eligible for recognition in the 2018 competition, NMSC will consider the 2017 PSAT/NMSQT® scores as an index score of college readiness. Selection scores of some 1.5 million test takers qualify for national merit scholarship program (NMSQ) consideration. For more information, please visit [www.nmsc.org](http://www.nmsc.org).

If any of your requirements (NMSQ Entry Requirements, Scholarship Awarded criteria, or International or Foreign-born student criteria) do not apply to you, please contact your National Merit Scholarship Corporation State Scholarship Administrator.

**National Merit Scholarship Corporation  
State Scholarship Administrator  
1900 Sherman Avenue, Suite 200  
Evanston, IL 60201-4807**

Include your name and home address along with your PSAT/NMSQT score and NMSC selection index score on the score report.

**Your NMSC Selection Index**  
**139**

NMSC uses a Selection Index score based on PSAT/NMSQT scores as an index score of college readiness. Selection scores of some 1.5 million test takers qualify for national merit scholarship program (NMSQ) consideration. For more information, please visit [www.nmsc.org](http://www.nmsc.org).

**Eligibility Information**  
You may only be nominated for the 2018 National Merit Scholarship Program and your Selection Index score will be considered among 1.5 million program entrants.

If your Selection Index score places you among the 50,000 highest scorers who qualify for National Merit Scholarship Program consideration, you will be notified via email when your Selection Index score and the score report.

**Entry Requirements**  
Nomination has provided on your most recent high school transcript:  
YES

Year to complete high school and meet all the following:  
2019

10th grade to be completed in grades 9-12:  
4

U.S. Citizenship:  
YES

**Your Scores: Next Steps**  
Additional skills and improvement suggestions can be found in your online score report.

Your score indicates that you are already **strong** in the following areas:

**Reading Test**  
**23**  
8 to 29

Read an increasingly challenging passage closely to draw a conclusion or inference.

Understand the text's main message for an inference when both explicit and implicit evidence is available, and cite a clearly stated line of evidence for a specific inference.

Determine the collection or theme of a methodology, challenging passage.

**Writing and Language Test**  
**20**  
8 to 29

Use supporting information to achieve a specific purpose (e.g., providing a short list of examples introduced by "For instance").

Recognize and correct an ambiguity, inappropriate shift in tone, or illogical connection when the context clearly calls for that change.

Drawing links between explicit and implicit passages and evidence between a passage and evidence.

**Math Test**  
**26.5**  
8 to 33

Solve a linear equation in one variable.

Identify a key feature of an exponential growth, equation, table, and/or linear relationship or function from a different representation.

Factor a polynomial from a polynomial expression.

Factor a rational into two binomials.

Improve your skills by focusing on the following suggestions:

When you are reading complex texts, look closely at the key information and details and think about how you connect the central ideas or themes of the text to your own knowledge.

When you read, think about how a particular piece of text, such as a paragraph, supports or contradicts the purpose of the text as a whole. Consider, for example, whether a sentence or a paragraph is larger than the previous paragraph or part of it.

In studying and writing, use vocabulary knowledge and an understanding of rhetorical context to make effective word and sentence choices.

Reading, always look for words or phrases that are unusual, such as when they appear with the same meaning or very similar meanings (e.g., "but" and "however" used to discuss the same thing).

Use function notation to represent dependent relationships.

Write real expressions in equivalent forms using recursive formulas.

Add, subtract, multiply, and divide real expressions.

Use the real-world relationship between units and equations to solve equations.

**Get more next steps online**

**SAT Practice**  
Connect to Khan Academy for FREE, world-class SAT practice on [satpractice.org](http://satpractice.org).

**AP and Coursework**  
See which AP courses may be good options for you.

**Register for the SAT**  
Select your SAT test date and register for a fee.

[studentscores.collegeboard.org](http://studentscores.collegeboard.org)      Ima B. Student 2017, 11th Grade

**Will Ima Be Able to Enter the National Merit Scholarship Program?**

Ima has an NMSC Selection Index score of 139, which is double the sum of her Reading (23), Writing and Language (20), and Math (26.5) Test scores. This Selection Index score is used by National Merit Scholarship Corporation to designate students to be recognized in its National Merit® Scholarship Program.

If an asterisk had appeared next to Ima's score, it would mean she does not meet entry requirements for the program. In this case, Ima meets entry requirements and will be recognized if her score places her among the 50,000 high scorers. For entry requirements and information on the steps in the competition, see the 2017 PSAT/NMSQT Student Guide or visit [www.nationalmerit.org](http://www.nationalmerit.org).

**How Can Ima Improve Her Academic Skills?**

**Your Scores: Next Steps** are based on her test scores, and what general skills similarly performing students understand. Ima can see which skills she performed well on and which she needs to improve. When she goes online and signs in to the full report, she can see additional skills and improvement steps. Ima can also link her account to Khan Academy® for personalized practice recommendations.

Score Report

**What Are the Next Steps for Ima?**

Under **Get more next steps online**, Ima is directed to [studentscores.collegeboard.org](http://studentscores.collegeboard.org) to learn how to prepare for the SAT and see her potential for challenging AP® coursework.

**When Should Ima Take the SAT?**

As a junior, Ima should begin planning when she will take the SAT. Most students take the SAT for the first time in their junior year. By planning now, Ima can ensure she has adequate time to practice for the SAT. She can take advantage of practice resources by visiting [studentscores.collegeboard.org](http://studentscores.collegeboard.org).

**How Can Ima Learn from Her Answers?**

Using her score report with her PSAT/NMSQT test booklet, Ima can see the actual questions, correct answers, and difficulty level alongside her own answers. She can use her online score report to review the questions she answered incorrectly or omitted, and to see detailed answer explanations.

For students who tested at a school participating in the test administration study, the actual questions, answers, and answer explanations will not be provided, and the score report will not include the correct answer column.

### Your Question-Level Feedback

Reading				Writing and Language				Math Test—Calculator			
Question #	Correct	Your Answer	Difficulty	Question #	Correct	Your Answer	Difficulty	Question #	Correct	Your Answer	Difficulty
1	A	A	Low	1	D	C	Low	1	H	A	Low
2	A	A	Low	2	C	C	Low	2	A	A	Low
3	B	B	Low	3	C	C	Low	3	A	A	Low
4	B	A	Low	4	A	A	Low	4	D	B	Low
5	B	B	Low	5	C	C	Low	5	B	B	Low
6	B	B	Low	6	S	S	Low	6	A	A	Low
7	B	B	Low	7	A	A	Low	7	B	B	Low
8	B	B	Low	8	B	B	Low	8	C	C	Low
9	B	B	Low	9	A	A	Low	9	A	A	Low
10	A	A	Low	10	D	D	Low	10	D	D	Low
11	D	D	Low	11	D	D	Low	11	D	D	Low
12	A	A	Low	12	B	B	Low	12	A	A	Low
13	D	D	Low	13	C	C	Low	13	B	B	Low
14	A	A	Low	14	C	C	Low	14	B	B	Low
15	C	C	Low	15	D	D	Low	15	D	D	Low
16	D	D	Low	16	A	A	Low	16	C	C	Low
17	D	D	Low	17	B	B	Low	17	C	C	Low
18	A	A	Low	18	C	C	Low	18	C	C	Low
19	A	A	Low	19	C	C	Low	19	A	A	Low
20	D	D	Low	20	A	A	Low	20	A	A	Low
21	D	D	Low	21	A	A	Low	21	D	D	Low
22	D	D	Low	22	A	A	Low	22	B	B	Low
23	B	B	Low	23	C	C	Low	23	B	B	Low
24	D	D	Low	24	C	C	Low	24	D	D	Low
25	C	C	Low	25	C	C	Low	25	B	B	Low
26	D	D	Low	26	A	A	Low	26	A	A	Low
27	B	B	Low	27	B	B	Low	27	A	A	Low
28	A	A	Low	28	B	B	Low	28	A	A	Low
29	A	A	Low	29	C	C	Low	29	A	A	Low
30	D	D	Low	30	C	C	Low	30	C	C	Low
31	D	D	Low	31	D	D	Low	31	D	D	Low
32	A	A	Low	32	A	A	Low	32	A	A	Low
33	D	D	Low	33	B	B	Low	33	B	B	Low
34	D	D	Low	34	B	B	Low	34	B	B	Low
35	D	D	Low	35	C	C	Low	35	C	C	Low
36	B	B	Low	36	C	C	Low	36	C	C	Low
37	B	B	Low	37	C	C	Low	37	C	C	Low
38	A	A	Low	38	C	C	Low	38	C	C	Low
39	A	A	Low	39	C	C	Low	39	C	C	Low
40	D	D	Low	40	C	C	Low	40	C	C	Low
41	B	B	Low	41	D	D	Low	41	D	D	Low
42	A	A	Low	42	C	C	Low	42	C	C	Low
43	A	A	Low	43	C	C	Low	43	C	C	Low
44	A	A	Low	44	C	C	Low	44	C	C	Low
45	A	A	Low	45	C	C	Low	45	C	C	Low
46	A	A	Low	46	C	C	Low	46	C	C	Low
47	C	C	Low	47	C	C	Low	47	C	C	Low

**Subscore**

400	Comp and Evidence	Key	Correct
300	Reasoning	Q	Correct
200	Textual Evidence	U	Unscored
100	Writing and Language	N/A	Not Applicable
0	Math Test	K	Key/Calculator
0	Math Test—Calculator	NA	Not Applicable
0	Math Test—No Calculator	NA	Not Applicable

**Crash-Test Score**  
558    Average of Math Test Scores  
80    Analytic in Science

Score Report