

GO BENGALS!



February 2024
<http://hhs.helenaschools.org>
2023-2024 School Year



A Message from the Principal's Desk... Bengal Families –

The United States Presidential Scholars Program was established in 1964, by Executive Order of the President, to recognize and honor some of our nation's most distinguished graduating high school seniors.

In 1979, the program was extended to recognize students who demonstrate exceptional talent in the visual, creative, and performing arts. In 2015, the program was again extended to recognize students who demonstrate ability and accomplishment in career and technical education fields.

Each year, up to 161 students are named U.S. Presidential Scholars, one of the nation's highest honors for high school students. The Scholars represent excellence in education and the promise of greatness in young people. In honoring the U.S. Presidential Scholars, the President of the United States symbolically honors all graduating high school seniors of high potential.

It is my honor to recognize talented senior Annika Nehring as a Presidential Scholar candidate. This is well-deserved recognition for Annika. It is also a celebration for her family, her teachers and the entire Helena community that has contributed and supported her in reaching her highest potential. Congratulations and Go Bengals!

Steve Thennis
Principal

SAVE THE DATE

- Feb 2-3
Divisional Wrestling
- Feb 2
HHS Registration for Juniors 2024-2025
- Feb 5
Nat'l School Counselor Appreciation Week
- Feb 5-6 AA Orchestra Festival, Helena
- Feb 9-10
State Swim-Great Falls
- Feb 9-10 State Wrestling, Billings
- Feb 19th—Presidents Day NO SCHOOL
- March 10—Daylight Savings Time





TRAVEL CLUB

Attention Travelers

Learn about our upcoming

2024 & 2025 trips:

Summer 2024 Australia &

New Zealand

Spring Break 2025 Capitals of Scandinavia

Summer 2025 Thailand, Cambodia, & Vietnam.

**Information meeting Wednesday February 28th at 5:30pm in the HHS
library**

HHS 8TH GRADE TOUR/ ACTIVITY FAIR

WHEN

**Wednesday, February 21st
8:30 am - 11:30 am**

WHERE

Helena High School

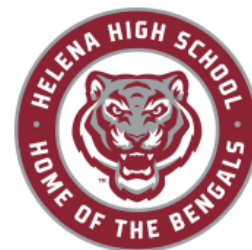
Meet at the HHS cafeteria by 8:30 am

COME AND SEE WHAT HHS HAS TO OFFER.

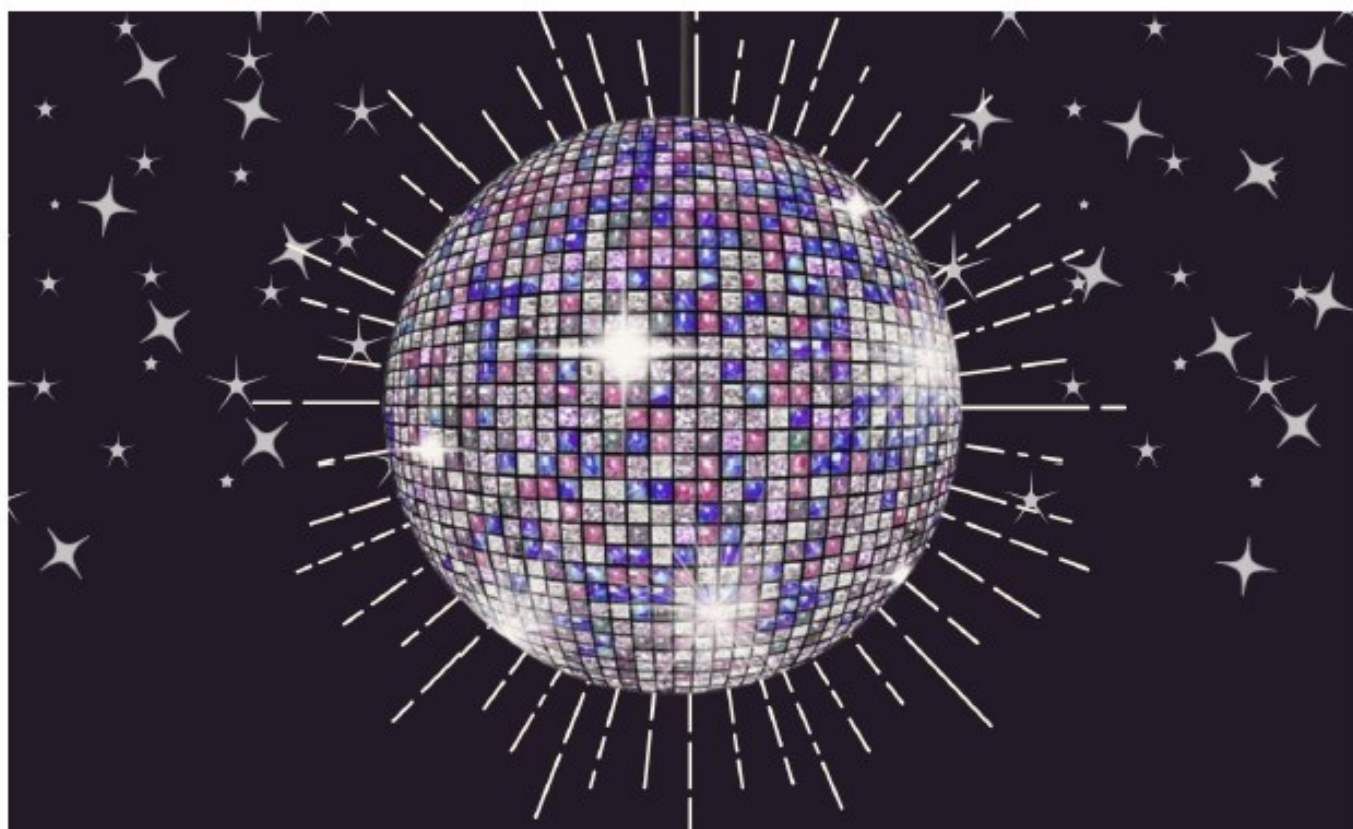
**WE HAVE AP AND DUAL CREDIT COURSES, OVER 40 CLUBS AND
ACTIVITIES. THERE IS "SOMETHING FOR EVERYONE".**

ALL HMS STUDENTS WILL ATTEND.

****Anyone outside HMS wanting to attend contact
Mr. Willie Schlepp at wschlepp@helenaschools.org
or 406-324-2205.**



SEE YOU THERE!!



MEET ME AT MIDNIGHT

TICKET

HELENA HIGH SCHOOL GYM

TICKET

PRICES:

FEBRUARY 23 2024

PRICES:

8-11 PM

2/12-2/16:

TICKETS WILL BE AVAILABLE

2/20-2/23:

\$15-SINGLE

AT THE DOOR

\$25-SINGLE

\$20-DOUBLE

\$45 DOLLARS PER TICKET

\$30-DOUBLE

Tickets will be sold during lunch in the Main Hall.

School Leadership Team Update

At Helena High, we use data to guide our efforts in ensuring the success of every student. Each month, we'll share a snapshot of our data and goals to keep you informed of our focus.



As a staff, we have focused on two main goals – **Active Engagement** from our students and **Instructional Collaboration** among our colleagues. Those continue to be a focus going into second semester.

Engaging in the content and in class is the best way for our students to learn the material. However, it seems like there just aren't enough teachers or time to always go around. Despite our best efforts, sometimes we just can't get to everyone – be it for extra math help or workshopping an essay or understanding a reading passage.

A unique tool that might help provide support when a human teacher isn't available is through Khan Academy. We shared with our staff this [TEDTalk](#) from Khan Academy founder Sal Khan about their new AI tutor embedded into their program – Khanmigo. Many of us felt this was an important tool to inform our adult community about as well. Here are a couple important points (specifically if a teacher isn't necessarily using it in the classroom but you want to offer it as a tool to your child):

1. A parent must add the Khanmigo feature to their child's account unless the child is over 18. They then must go and manually turn the AI tutor "on" for each child in their account. This is a safeguard.
2. There is a cost associated with it - \$4/month or \$44/year. Incredibly cheap compared to an in-person tutor but still a cost.

I set up an account for one of our children to try it out. The tutor was able to answer all kinds of questions and provide support in all the subjects I tried (math, English, personal finance, internet safety and science). It could be a powerful tool to bring equity to our classrooms and provide students independent practice and a personal tutor to help fill gaps.

Additionally, I encourage you to read through [this article written this fall](#). It puts AI into perspective, informs us of the multiple tools at our disposal, and hopefully pulls us out of the doomsday scenario we can sometimes get sucked into.

Moving forward, the SLT will continue to focus our trainings around instructional collaboration and additional strategies to engage all students. As our adult support at home, keep encouraging your child to get to school, get enough sleep, and engage themselves in their classes.

Should you have questions about HHS data or goals for the year, please reach out to Mr. Thennis or Mrs. Meghan Schulte. For inquiries regarding district data and assessments, contact Mrs. Kaitlyn Hess.

Thank you for supporting your student's journey to become the best Bengal they can be!

From the Desk of the School Nurse



Parents of seniors and graduating juniors: Many students will be applying to colleges prior to graduation. There are vaccinations that may be required or recommended by health care providers, in particular, MMR (Measles, Mumps, Rubella, if not already administered), Meningitis and Hepatitis B (if not already administered):

If parents and/or students would like a copy of their immunizations to send to colleges, please email the school nurse, Emily Rodway at erodway@helenaschools.org

Students will be able to pick up their immunizations from the Health Room by the end of the week. If immunizations are needed by a certain date, please include that in your email. Always keep a copy for your own records and future need.

Montana Law stipulates: (2) (a) The governing authority of a postsecondary school may not allow a person to attend as a pupil unless the person:

(i) has been immunized against rubella and measles (rubeola) in the manner and with immunizing agents approved by the department; or

(ii) files for an exemption as provided in **20-5-405**.

(b) The governing authority of a postsecondary school may, as a condition of attendance, impose immunization requirements that are more stringent than those required by this part, subject to the exemptions provided for in **20-5-405**.

https://leg.mt.gov/bills/mca/title_0200/chapter_0050/part_0040/section_0030/0200-0050-0040-0030.html

There are Religious and Medical Exemptions allowed by Montana State Law:

https://www.leg.mt.gov/bills/mca/title_0200/chapter_0050/part_0040/section_0050/0200-0050-0040-0050.html

Links to those forms are here:

Religious Exemption

Link to Religious Exemption Form:

<https://dphhs.mt.gov/assets/publichealth/Immunization/HES113Schools.pdf>

Medical Exemption

Link to the Medical Exemption Form:

<https://dphhs.mt.gov/assets/publichealth/Immunization/HES101A.pdf>

Conditional Attendance

Link to the Conditional Attendance Form:

<https://dphhs.mt.gov/assets/publichealth/Immunization/HES103.pdf>

Vaccinations may be obtained by your **student's health care provider**. If needed, your student may get vaccinations at the clinics below or their pharmacy:

Lewis and Clark Public Health (LCPH)

1930 9th Avenue
Helena, MT 59601
406-457-8900

PureView Health Center

1930 9th Avenue
Helena, MT 59601
406-457-0000

~~PureView~~ Health Center offers financial assistance through a sliding fee scale.

Helena Indian Alliance (HIA)

501 Euclid Ave.
Helena Montana, 59601
406-449-5796

For families without medical insurance, a sliding fee scale, based on income, is available.

New patients to HIA, please register first at: <https://hia-mt.org/care>

Clinics will need a copy of all vaccinations already given, especially if the vaccinations were given outside of Montana. Your student's vaccination record may be obtained through a school nurse, if a record has been turned into school.

Resources

<https://www.cdc.gov/vaccines/schedules/downloads/adult/adult-combined-schedule.pdf>

<https://www.webmd.com/vaccines/features/vaccines-for-college-students>

Attendance News

Parents—please remember to provide the attendance office at least 1-hour prior notice when you want your student dismissed.

This will eliminate any problem getting dismissed on time. Also if you call in advance (324-2211), your student can meet you outside. You don't have to come into the school to excuse them.





COUNSELING NEWS

HELPING YOU HELP YOUR CHILD FIND SUCCESS

FEBRUARY 2024

HHS Registration Timeline

- Friday, January 26:** Meeting with MT City 8th graders @ 8:30 AM.
- Monday, January 29:** Classroom presentations in Junior English classes.
- Friday, February 2:** Juniors meet in library (English 3) to register.
- Monday, February 5:** Classroom presentations in Sophomore Biology classes.
- Friday, February 9:** Sophomores meet in library (Biology) to register.
- Tuesday, February 20:** Classroom presentation in Freshman World Culture classes.
- Wednesday, February 21:** HMS Students tour HHS (8:30-11:30).
- Friday, February 23:** Freshman meet in library (World Cultures) to register.
- Monday, February 26:** Meeting with HMS 8th graders.
- Monday, February 26:** Parent night for incoming frosh at HMS Auditorium @ 6:00 PM.
- Friday, March 1:** HMS registration forms due. All other middle school registration forms due.

CONGRATULATIONS TO OUR STUDENTS OF THE MONTH:

EXCHANGE CLUB:

Ashley Koenig
Annika Nehring
Sam Schiltz

MBI:

Gabe King
Masie McCarthy
Mollee Boyle
Haleigh Tavary

FOOD PANTRY



The Counseling Department has a food pantry for students to pick up a snack or lunch during the school day. In addition, we have weekend bags available to pick up on Fridays!

If your student could benefit from this, please encourage them to stop by our office - We have plenty available and are happy to help the families of Helena High School in this way.



MEET OUR TEAM



Jaime **Pandis** A-E
Ellaina **Staldine** F-L
Jason **Murgel** M-R
Chrissy **Murgel** S-Z

Alexis **Navarrete**
Career/Jobs/Internships
Corena **VanDaele**
Office Manager



ACT

APRIL 9TH
JUNIORS DAY ONLY

REMOTE LEARNING DAY FOR
9TH-10TH-12TH

SAVE THE
DATE



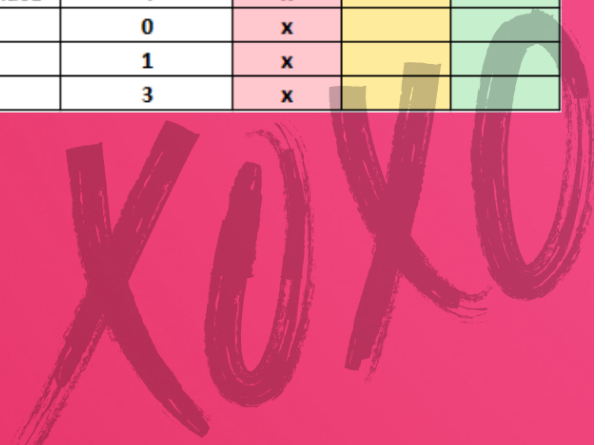
DUAL ENROLLMENT

All dual enrollment paperwork is due by end of March for 2024-25 School Year.

You will need to submit the Dual Credit Application, Dual Credit Registration, Dual Credit Release of Information. Students taking their first math class will need to complete the Math Placement Form.

All of the forms can be found on the school website at bit.ly/dualenrollmentthhs

Instructor	Course/Section	Approved Helena College Courses	Period Offered	Year	Fall	Spring
Alane Dinsdale	ACTG 101	Accounting Procedures I	1	x		
Alane Dinsdale	CAPP 154	MS Word	6		x	
Alane Dinsdale	CAPP 156	MS Excel	6			37284
Shannin Preshinger	WRIT 101	College Writing	0		x	
Shannin Preshinger	WRIT 101	College Writing	1		x	
Shannin Preshinger	WRIT 101	College Writing	3		x	
Shannin Preshinger	LIT 110	Intro to Literature	0			37225
Shannin Preshinger	LIT 110	Intro to Literature	1			37226
Shannin Preshinger	LIT 110	Intro to Literature	3			37227
Nicole Lindgren	M 105	Contemporary Math	3			37228
Nicole Lindgren	M 105	Contemporary Math	4			37229
Nicole Lindgren	M 121	College Algebra	0		x	
Nicole Lindgren	M 121	College Algebra	2		x	
Nicole Lindgren	STAT 216	Introduction to Statistics	0			37230
Nicole Lindgren	STAT 216	Introduction to Statistics	2			37231
Hillary Potuzak	M 151	Pre-Calculus	6	x		
Hillary Potuzak	M 151	Pre-Calculus	7	x		
Hillary Potuzak	M 171	Calculus I	1	x		
Hillary Potuzak	M 171	Calculus I	3	x		
Hillary Potuzak	M 172	Calculus II	4	x		
Tessa Berg	M 151	Pre-Calculus	1	x		
Tessa Berg	M 151	Pre-Calculus	2	x		
Tessa Berg	STAT 216	Introduction to Statistics	4	x		
Jonathan Driggers	M 111	Technical Math	1	x		
Cindy Galbavy	WLDG 107	Indust Safety for WLDG	0,1			37285
Randy Hussey	COMX 106	Communication in a Dynamic Workplace	2	x		
Randy Hussey	COMX 106	Communication in a Dynamic Workplace	4	x		
Sheila Orzechowski	PSYX 100	Introduction to Psychology	0	x		
Sheila Orzechowski	PSYX 100	Introduction to Psychology	1	x		
Sheila Orzechowski	PSYX 100	Introduction to Psychology	3	x		



SCHOLARSHIPS

Gianforte Trade and Technology

Deadline 02/15

Joseph "Joey" McKeon Memorial Scholarship

Deadline 02/16

Coolidge Scholarship

Deadline 02/23

Montana Odd Fellows/Rebekah Scholarship

Deadline 03/15

Montana University System Honor Scholarship

Deadline 03/15

Horatio Alger Association Scholarship

Deadline: 03/15

Hispanic Scholarship Fund

Deadline 03/15

**Montana Federation of Public Employees
Scholarship**

Deadline: 03/15

Helena Kiwanis Club Weber Music Scholarship

Deadline: 04/01

Helena Kiwanis Club "Key Club" Scholarship

Deadline: 04/01

Bonnie Sue Heller Memorial Scholarship

Deadline: 04/05

The HHS scholarship page includes many of the awards found on the Reach Higher and MCF sites. Be sure to check there for new opportunities:

bit.ly/scholarshiphs

Bengals
HELENA



SCAN ME



Upcoming Events & Dates Spring 2024

FEBRUARY



- February 5th** Last day to submit Dual Credit Registration documents
- February 7th** Shadow Days-Trades
- February 21st** Helena WINS-Manufacturing and Mechanics Night

MARCH

- March 6th** Shadow Days
- March 22nd** Registration begins for current Early College students
- March 25th & March 26th** Skills USA at Airport Campus

APRIL

- April 15th** Dual Enrollment Information Night
- Last day to drop Early College with a W(Withdrawal)
- April 17th** Shadow Days

May

- May 10th** New Early College Student Registration Opens

Contact:

Cheryl Ravenscroft, Assistant Director of K-12 Partnerships

Cheryl.Ravenscroft@helenacollege.edu

406-447-6993

Gabrielle Wheeler, Dual Enrollment Coordinator

Gabrielle.Wheeler@helenacollege.edu

406-447-6953

Helena College Mission:

Helena College supports our diverse community by providing the paths and tools necessary to assist learners in achieving their educational and career goals.

NIGHT TO SHINE

Awesome night of entertainment!
Night to Shine tickets
February 20th

www.helenaciviccenter.com
\$10-\$20-\$30

